

Cohesion policy

2007-2013

Structural Funds in energy and transport State of play and prospects for 2007-2013



Eddy Hartog
Head of unit
Directorate General for regional policy

DG Regional Policy

ManagEnergy Annual Conference on Local Energy Action Brussels, October 20, 2004

Cohesion policy

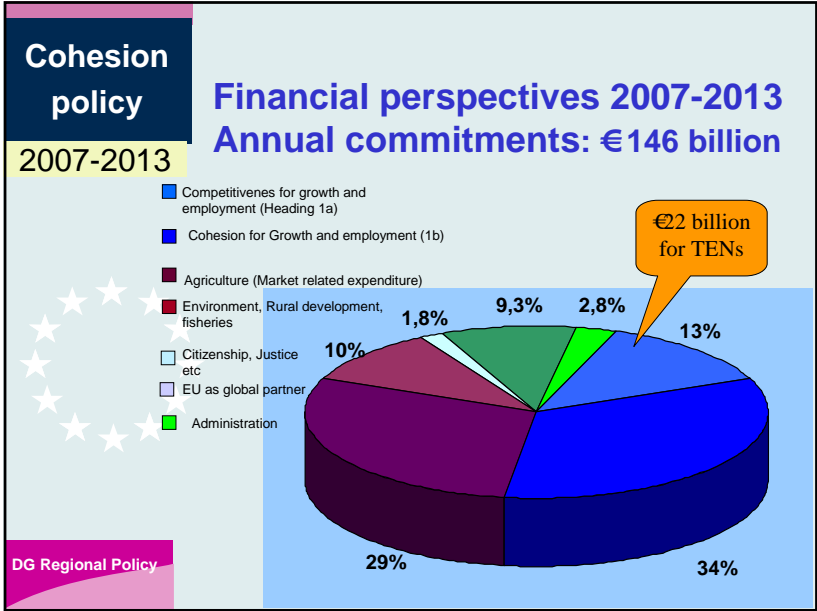
2007-2013

Overview on the major steps so far



- **February 2004:** Communication on a financial framework for the enlarged Union of 25 2007-2013
- **February 2004:** 3rd Cohesion report setting out the Commission's vision for the future of the EU cohesion policy
- **June 2004:** Package of revised and new regulations for the cohesion policy suggested by the Commission

DG Regional Policy



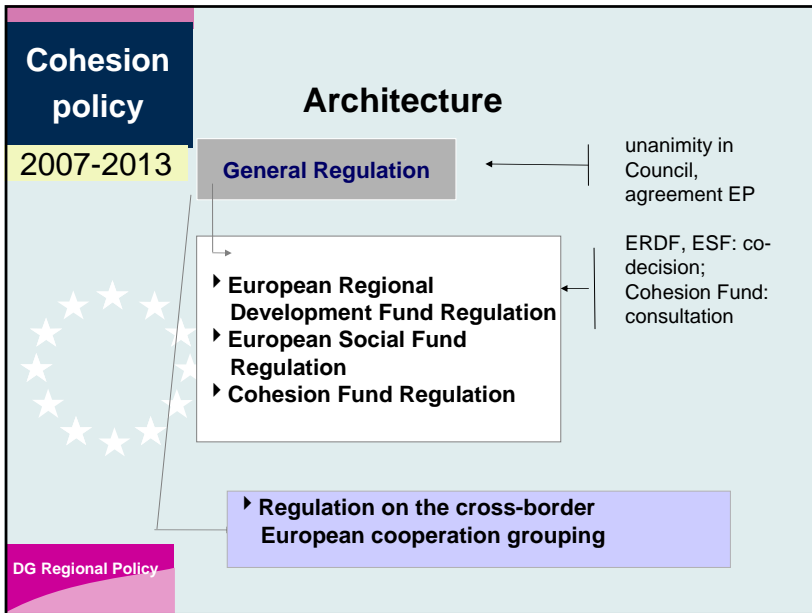
Cohesion policy

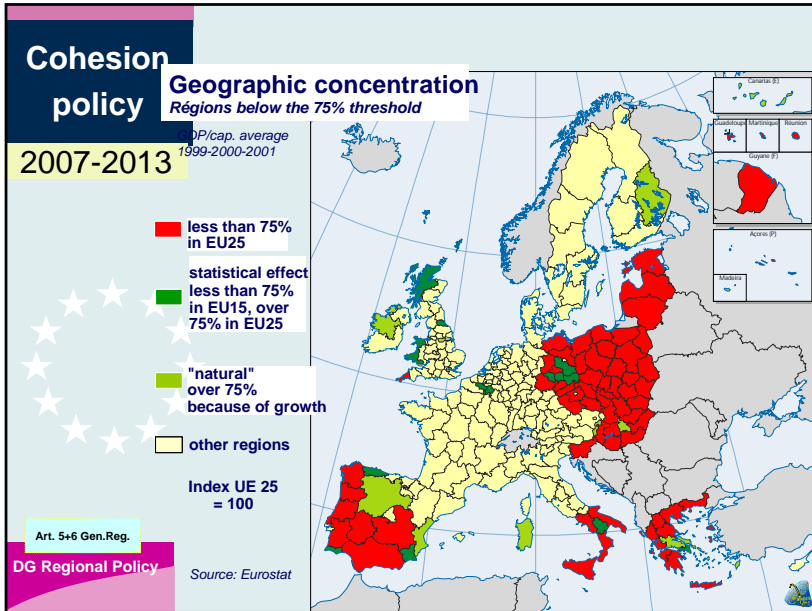
2007-2013

Cohesion policy

- Is 1/3 of the EU budget (€336 billion at 2004 prices)
- Is +/- 0.41% of EU GDP {including rural development and fisheries 0.45%}
- More or less 50-50 between old and new Member States
- More or less ¾ to regions and Member States lagging behind

DG Regional Policy





- Cohesion policy**
- Thematic concentration:
Lisbon and Gothenburg agenda**
- 2007-2013
- **Macro-economic context** (GNI, productivity, public finance)
 - **Employment** (employment targets, skills, mobility, quality, migration)
 - **Knowledge-driven society** (R&D, broadband, biotechnology, education)
 - **Economic reforms** (internal market)
 - **Social cohesion & social model** (social inclusion, discrimination)
 - **Environment** (Kyoto, biodiversity)
- DG Regional Policy
-

Cohesion policy

2007-2013

Cohesion policy and Lisbon already now an issue

Investments in 2000-2006



- +/- €8.8 billion in R&D
- +/- €5.8 billion on information society
- +/- €19.4 billion on environment
- +/- €38 billion on transport
- +/- €1.9 billion on energy

DG Regional Policy

Cohesion policy

2007-2013

Cohesion policy and Lisbon even more in the future

Increased focus on Lisbon priorities



- Definition of sectors
-in particular for regional competitiveness and employment
 - ✓ Innovation and knowledge society
 - ✓ Environment and risk prevention
 - ✓ Accessibility
- Strategic guidelines and Commission mandate

DG Regional Policy

Cohesion policy

2007-2013



DG Regional Policy

Major challenges in transport policy

- integrate and modernise road and rail networks in the 'new' member states and link them better with the 'old' member states
- improve connections to the Trans European Networks (secondary networks)
- improve cross-border and transit routes especially between the new member states
- develop short sea shipping and inter-modal transport
- shift from road to rail and waterway transport
- improve transport links with outermost regions

Cohesion policy

2007-2013



DG Regional Policy

The Cohesion Fund and transport

- trans-European transport networks (TEN), notably the priority projects of European interest
- outside TEN when on a sustainable basis and with clear environmental benefits – rail, river and sea transport, inter-modal transport systems and their interoperability, management of road and air traffic, clean urban and public transport

Cohesion policy

2007-2013



DG Regional Policy

ERDF and transport in convergence region

- investments in transport including
 - trans-European networks
 - integrated strategies for clean urban transport
- contributing to improving quality and accessibility for both passenger and freight transport
- promoting a more balanced modal split
- promoting inter-modal systems
- reducing environmental impacts

Cohesion policy

2007-2013



DG Regional Policy

ERDF and transport in non convergence regions

- promoting clean urban transport
- strengthening secondary networks to TEN by:
 - improving links to regional railway hubs, airports, ports and multimodal platforms
 - providing radial links to main railway lines
 - promoting regional and local inland waterways

Cohesion policy

2007-2013



DG Regional Policy

ERDF and transport Cross-border

- reducing isolation and improving accessibility, including cross-border sections of TEN
- improving local and regional access to national and trans-national networks and platforms
- enhanced inter-operability of national and regional systems

Cohesion policy

2007-2013



DG Regional Policy

Major challenges in energy policy

- improve security of supply
- integrate better environmental considerations
- promote renewable energy sources (RES)
- complete the internal energy market

Cohesion policy

2007-2013



DG Regional Policy

Energy policy versus territorial cohesion

- Energy sector provides employment
- Availability/cost of energy influences location
- Export of energy, source of income?
- Energy and the cost of life
- Energy and environment are linked

ESPON project on Territorial trends of energy

Cohesion policy

2007-2013



DG Regional Policy

ERDF and energy policy in convergence regions

- investments in energy, including trans-European networks
- contributing to improving security of supply
- completing the internal market
- integrating environmental considerations
- improving energy efficiency
- developing renewable energies

**Cohesion
policy**

2007-2013

ERDF and energy policy - other



- The European Regional Development Fund in non convergence regions: stimulating energy efficiency and renewable energy production
- INTERREG: reducing isolation through improved access to energy systems, enhanced inter-operability of national and regional systems

DG Regional Policy

**Cohesion
policy**

2007-2013

**Opportunities for transport and
energy.....**



**..... but priorities must be set at
EU and national level**

DG Regional Policy

Cohesion policy

2007-2013



End 2005:

Decision by Council and European Parliament

beginning of 2006:

Council adopts Community' strategic guidelines on cohesion

2006:

Preparation of programs for period 2007-2013

1 Jan 2007:

Implementation begins

DG Regional Policy

Next steps